

DELPHI Plus DISCORE SOLID

PSLD (Percutaneous Stenoscopic Lumbar Decompression)



DP403-90-280



DP403-45-280



DP403-0-280



BSD 240 DS-W



Round Diamond Burr



Egg Diamond Burr



Cylinder Diamond Burr



Inverted Cone Diamond Burr



Shaver Burr



Egg Cutting Burr



Round Cutting Burr



Cylinder Cutting Burr



Inverted Cone Cutting Burr

Working Length	Ball Diameter
240mm / 290mm	2,3,4,5mm

PELD

DELPHI Plus DISCORE SOLID

PELD (Percutaneous Endoscopic Lumbar Discectomy)



BSD 370 UL-W



Round Diamond Burr



Egg Diamond Burr



Cylinder Diamond Burr



Inverted Cone Diamond Burr



Shaver Burr



Egg Cutting Burr



Round Cutting Burr



Cylinder Cutting Burr



Inverted Cone Cutting Burr

Working Length	Ball Diameter
320mm / 350mm	3.5mm



ARMED DELPHI SYSTEM



fideltas

PSLD

DELPHI



**PROFESSIONAL
ENDOSCOPY RADIO FREQUENCY SYSTEM**



Features

- Two in One System(Low & High Output)
- Automatic Stop and Go(15sec.)
- User Friendly Design
- Wide Range of Indications (Spine Endoscopy, Sport Medicine)
- Automatic Operation Light Probe



PETTI MODE

- Low Power for Safety Endoscopy Surgery
- Protection of Dura
- PETTI: 1W~125W(250)

GRANDE MODE

- High Power for Tissue Cutting
- And Blood Coagulation
- GRANDE: 17W~340W(250)

Line Voltage	AC100/ 220V
Line Frequency	60HZ
Output Frequency	100KHz
Output Power	PETTI: 1W~125W(250) GRANDE: 17W~340W(250)
Type	Bipolar Default
Connecton Port(Power)	2 port(1~125W/17~340W)
Connection Port(Foot)	2port

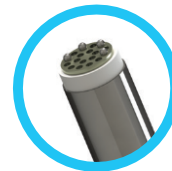
PROFESSIONAL ENDOSCOPY RADIO FREQUENCY SYSTEM



Biportal Endoscopy



DPS403-45-150



DPS403-0-150



DPS403-60-150



DPS403-90-150



DP404-15-110



Stryker Type



Linvatec Type



Arthrex Type



Round Diamond Burr



Egg Diamond Burr



Cylinder Diamond Burr



Inverted Cone Diamond Burr



Shaver Burr



Egg Cutting Burr



Round Cutting Burr



Cylinder Cutting Burr



Inverted Cone Cutting Burr

Working Length	Ball Diameter
138mm	2,3,4,5mm

Biportal Endoscopy



©2022 Distributed by Armed Inc.

Gyeonggi-do, Yongin-si, Suji-gu, Daeji-ro, 436th floor 606-253 South Korea

Phone: +(82)-70-420-2941 E-mail: sales@armed.kr

www.armed.kr